

Uxbridge Mini-Forests

Rotary
Uxbridge



LITTLE FORESTS DURHAM

Michael Banh

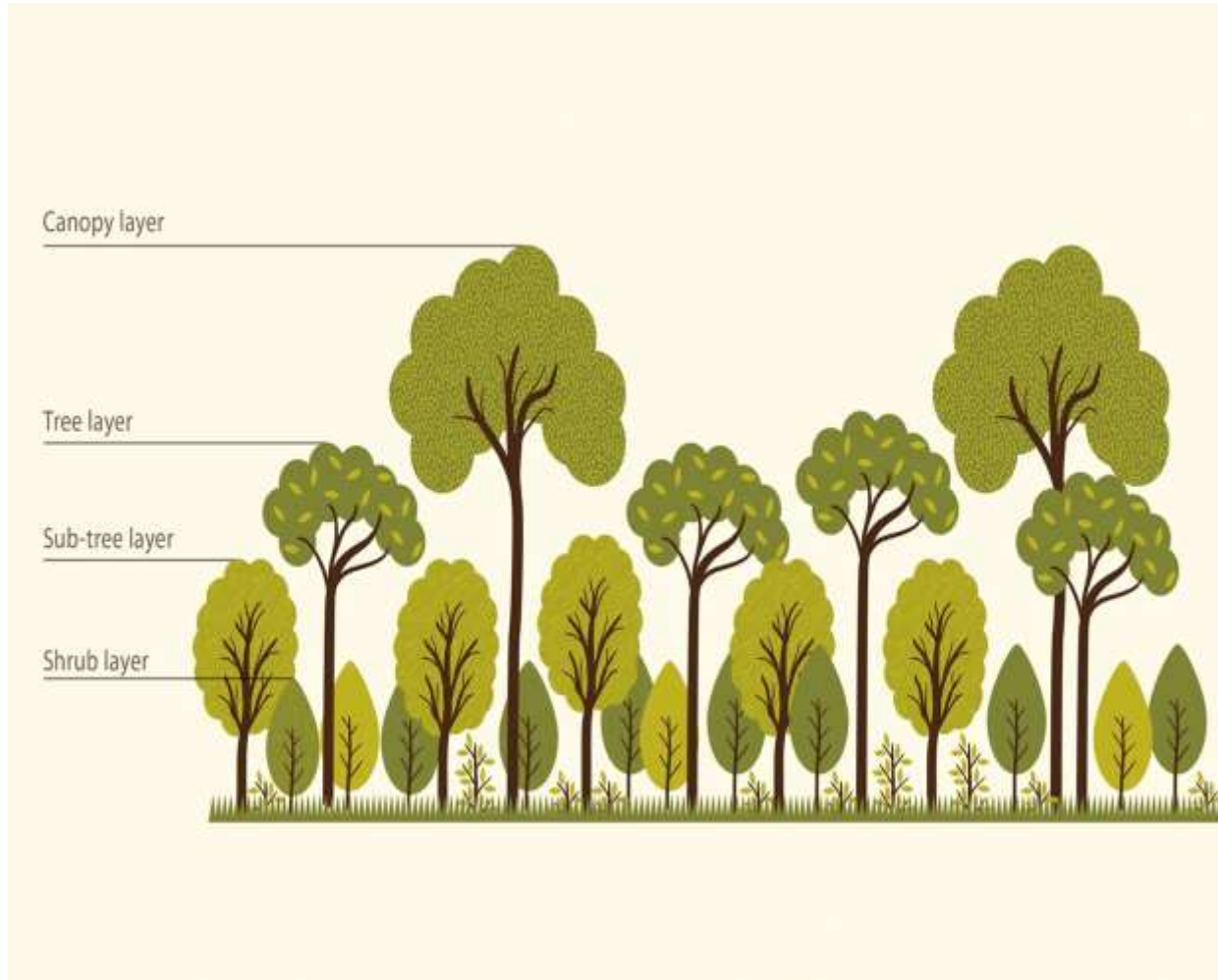
Ingrid Jansen

Rotary Club of Uxbridge Bioswales



What is a Mini-Forest?

(AKA - little forest, tiny forest, Miyawaki forest)



- Based on the Miyawaki Method
- Densely planted community of native trees and plants (30+ species) in a small area the size of a tennis court
- At least 3-5 plants / sq m
- Represents all layers in natural forest

Benefits of a Mini-Forest



10 Times
Faster Growth



30 Times
Denser



30 Times
Better CO2 Reduction



20-100 Times
More Biodiversity

- Sequester carbon
- Increase biodiversity
- Moderate temperature
- Reduce noise and air pollution
- Improve drainage and prevent erosion
- Create greenspace & improve mental health
- Reduce grass to be mowed
- Legacy for future generations to enjoy

Key Differences between Mini-Forests and Conventional Tree Planting



	Conventional Urban Tree Planting	Mini-Forest Planting
Planting Density	Spaced 3m apart	3-5 plants per m ²
Number of Species	Fewer species (1-5 species)	30+ species
Site Preparation	None usually	Soil amendment months in advance
Land Usage	Several acres	As small as 100 m ²

Examples of Mini-Forests



Rinnoji Temple, Japan



14 years later

Examples of Mini-Forests



Clifton, Karachi



After two years

Examples of Mini-Forests



Clifton, Karachi



After three years

How do we create a Mini-Forest?



Step 1
Select a site



Step 2
Remove the grass



Step 3
Soil Amendment

How do we create a Mini-Forest?



Step 4
Mulch!



Step 5
Select Native Species



Step 6
Map out distribution

How do we create a Mini-Forest?



Step 7

Plant 3-5 per sq meter



Step 8

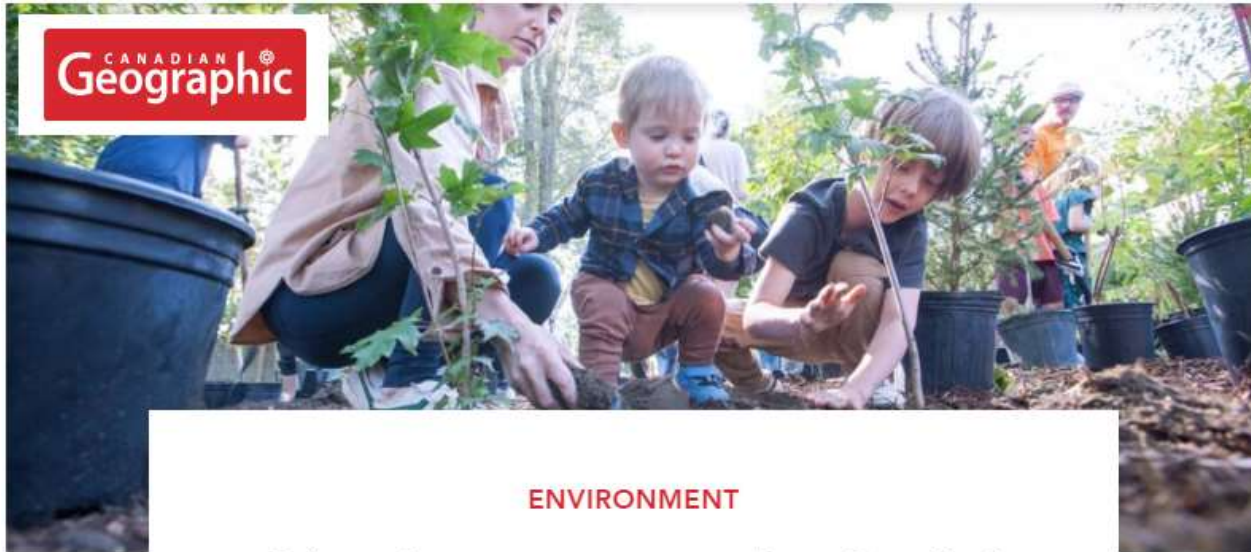
Maintain for 2-3 years



Celebrate and Repeat!

Mini-Forests in Canada





ENVIRONMENT

Planting a **network of mini forests** across Canada

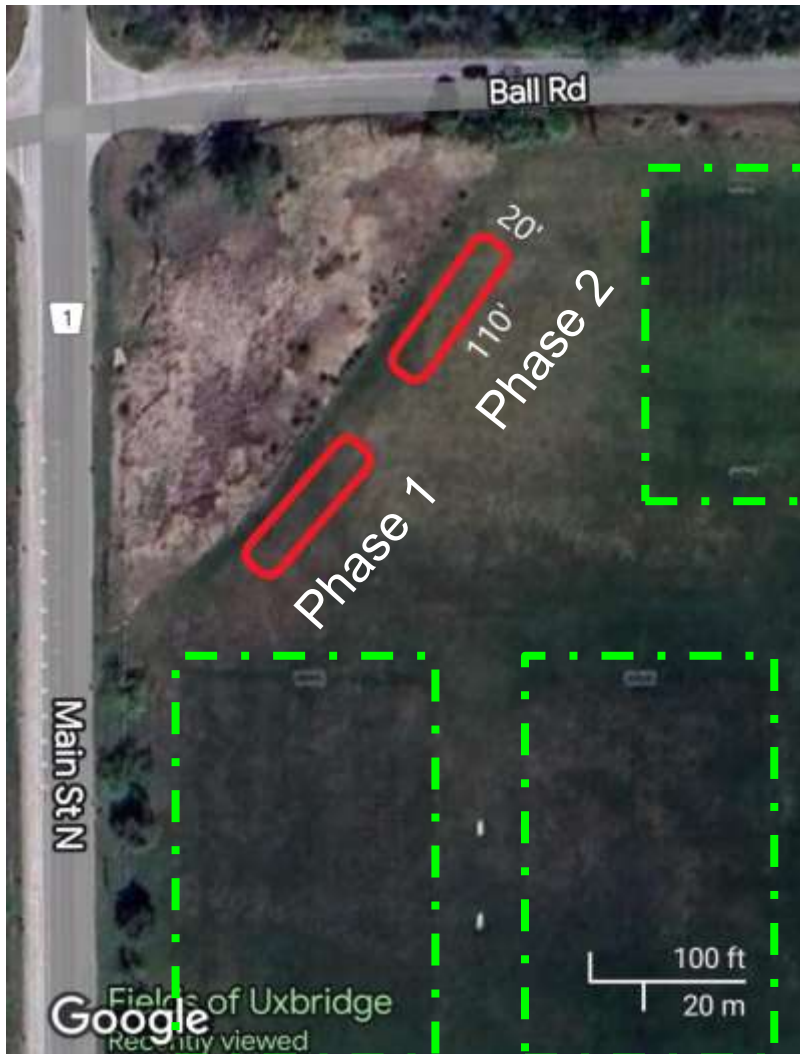
Six new mini forests were planted in cities across Canada in 2023 as part of a national pilot project to combat biodiversity loss and create new green spaces in urban areas — and the work is just beginning

PUBLISHED JAN 03, 2024 | UPDATED JAN 25 | 758 WORDS |
4 MINUTES

Good things take root when a community comes together to plant a mini-forest. Neighbours meet and connect. Urban wildlife find leafy refuge from the concrete and glass landscape of the city. The air gets cleaner and cooler.

That's the ethos and the vision behind a national pilot project to introduce new green spaces into urban environments and combat biodiversity loss in Canada by planting mini forests. The project, led by **Green Communities Canada in collaboration with Dougan & Associates, Canadian Geographic and Wilder Climate Solutions through the Network of Nature**, aims to transform identified sites using an innovative tree-planting method modelled after the Miyawaki forest technique.

The Uxbridge Mini-Forest Project



- **Proposed Site:** Fields of Uxbridge
- **Plan: TWO mini-forests in 2 phases:**

Phase 1: Site Prep - July 6, 2024

Planting - Oct 19/Nov 2, 2024

Phase 2: Site Prep - Spring 2025

Planting - Fall 2025

Funding for Uxbridge Mini-Forest Project

Phase 1 - Mini-Forest (2024)	Phase 2 - Mini-Forest (2025)
<ul style="list-style-type: none">● \$10,000 Green Communities Canada (in partnership with Greenbelt Foundation) Grant● \$5000 LSRCA Grant	<ul style="list-style-type: none">● \$5000 from nine Rotary Clubs● \$5000 Rotary District Grant (TBC July 2024)● \$5000 LSRCA Grant
Total Funding = \$15,000	Total Funding = \$15,000

Requests of Township of Uxbridge

- 1) Approval of the Uxbridge Mini-Forest Project at Fields of Uxbridge
- 2) Help from Town crews to:
 - i) Scrape the grass
 - ii) Temporary fencing for the first 2-3 years
 - iii) Watering if needed for the first 2-3 years

Recognition for Uxbridge Mini-Forests Project



Permanent sign to educate the public about this project and to recognize the major stakeholders involved:



The best time to
plant a tree was
20 years ago.
The second best
time is now.

~Chinese Proverb

