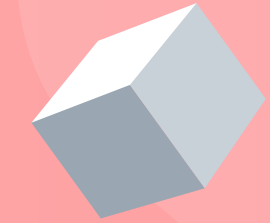


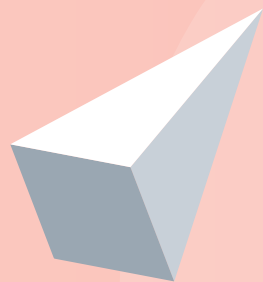
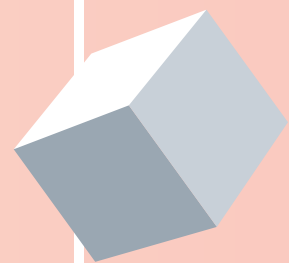


# AGRIHOOD REVELSTOKE

# THE GOAL



**TO DEVELOP LAND IN HARMONY WITH NATURE, CREATING  
PERPETUALLY AFFORDABLE HOMEOWNERSHIP, ENGAGING  
COMMUNITY, AND PROMOTING BALANCED LIFESTYLE  
PRACTICES**

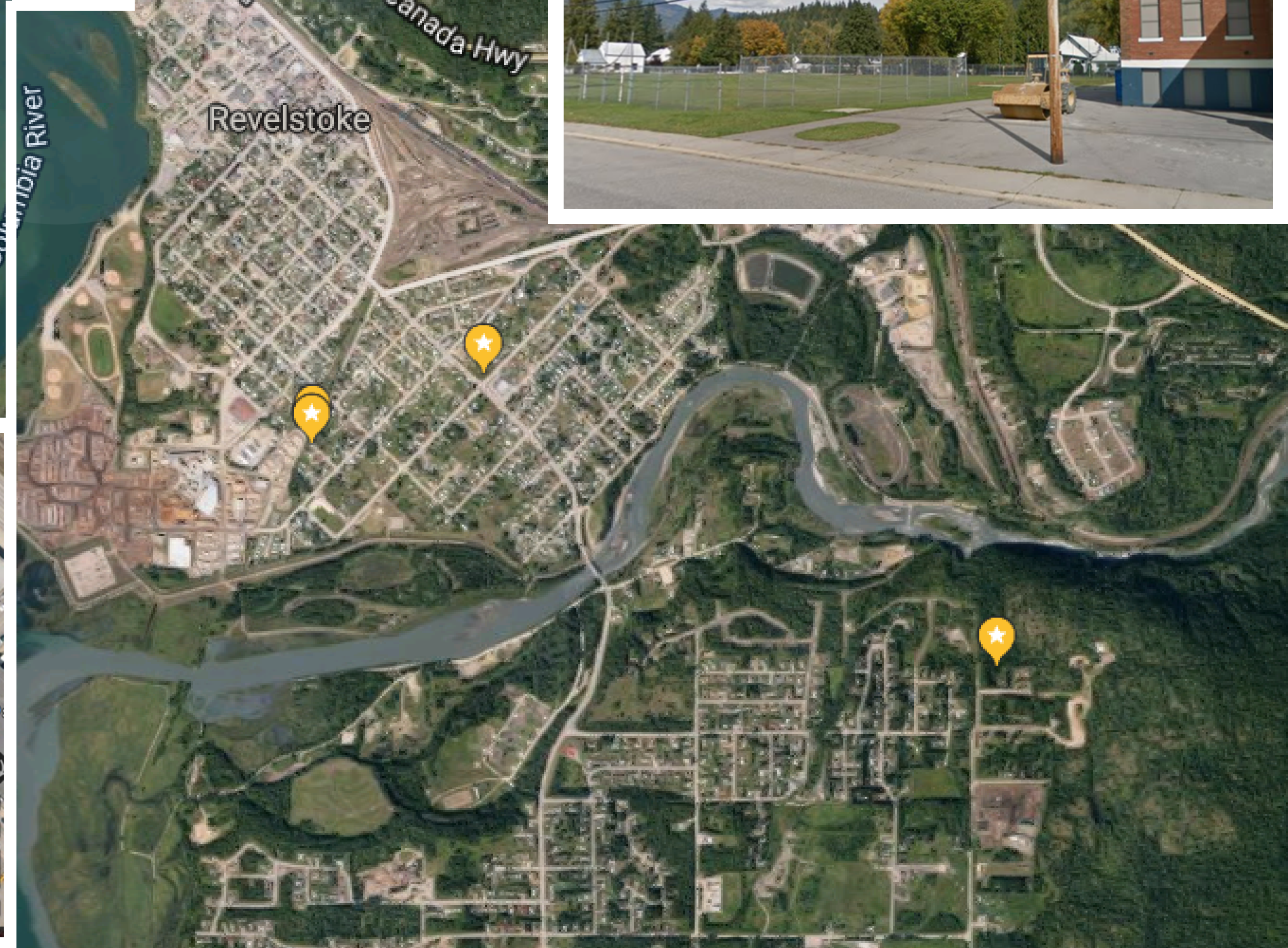
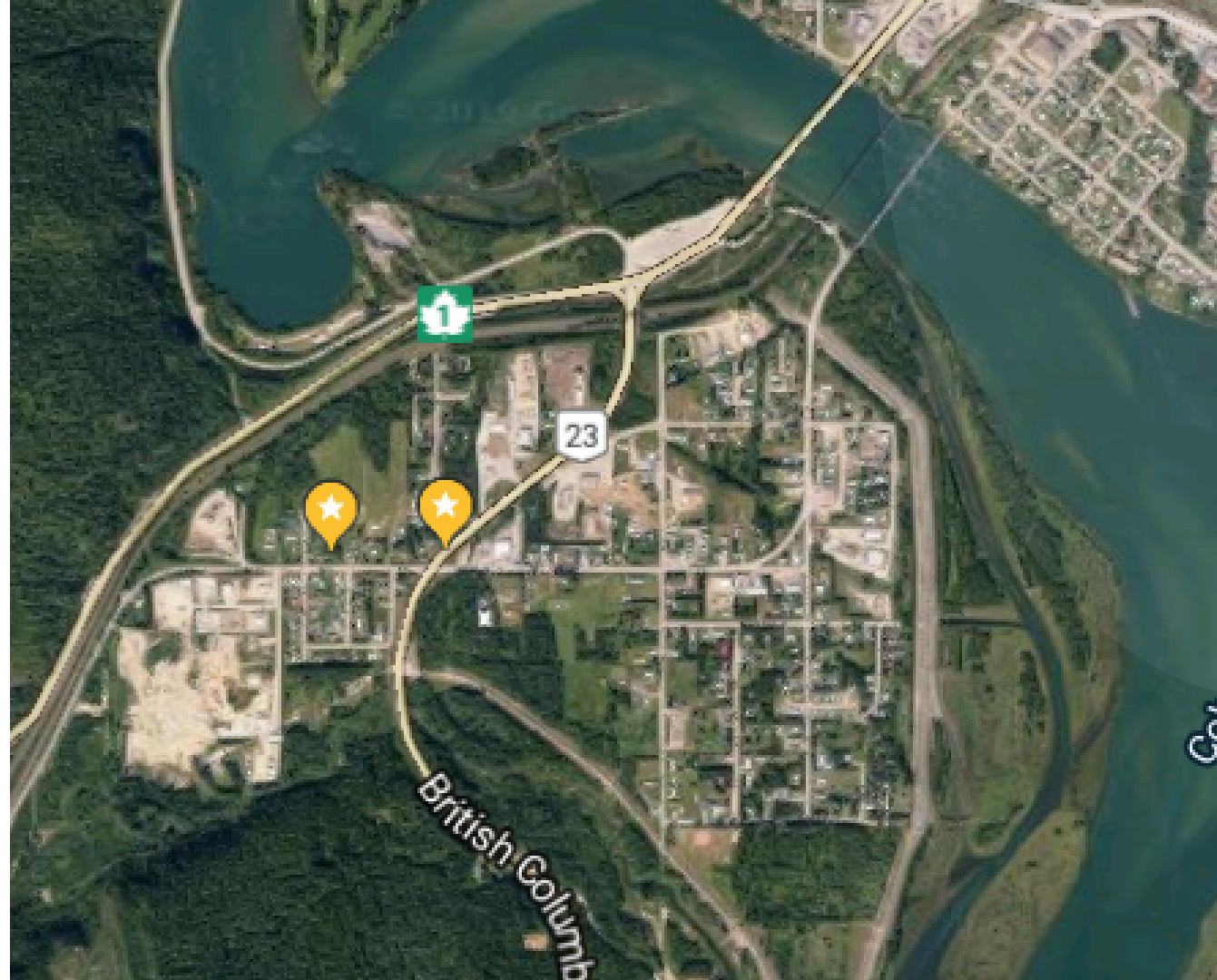


How big are these homes?

What amenities are important?

How much would this cost to create?

Can we create housing that is permanently affordable?



## MOUNTAIN VIEW ELEMENTARY

2.11 Acres - Likely subdivided into 16(50x115'') lots  
BC Housing bought Begbie View E. (3.2 Acres) for \$1.5m

# AGRIHOOD DEVELOPMENT

Neighbourhood, Food, Connection

6 Lots - 0.7 Acres

Est. Cost per Lot: \$93-\$100,000

Land Cost: \$600,000

8 Proposed Homes



3rd Street



Creative Gate

2nd Street



# SHARED LAND

Bareland Strata - Mortgage, Insurance & Freehold  
Shared Park & Amenities  
Food Forests & Gardening

# ARGICULTURE

Greenhouse (8x12), Chicken Coop (8x12)

6 - Growroom Spheres - IKEA Lab

6 - Fruit Trees (Apple, Pear, Cherry)

11 - Food Forest Guilds



A modern wooden garage with a green roof and bicycles mounted on the wall. The garage has a wooden shingle exterior and a large wooden door. A woman is riding a bicycle on a gravel path in the foreground. The background features a house, trees, and mountains.

# AMENITIES

2 - Garages (Gear Storage, Workshop, Office)

Common House (Games, lounge, dining)

Fire Pit, Play and Picnic Areas



# 8 SMALL HOMES

2 Bedroom, 1 Bath, 500sqft Interior, 150sqft Porch,  
190sqft Patio, 600sqft Food Forest Bioswale



# PRIVACY

Rainwater Collection Bioswale w. Pump  
Personal Composter



# DEVELOPMENT COST ESTIMATE

Land Cost: \$600,000

Small Homes: \$960,000

Amenities: \$216,000

Landscaping

Utilities & Legal: \$256,000

Total: \$2,032,000.00

/8 Residences = **\$254,000.00 per Unit**

## \$479,000

Average Home Price in  
Revelstoke

## Measures of Affordability

61% Price Difference

\$1,115.00 Mortgage Monthly Payment + Stata Fee