

# Durham Region Climate Change Update

Township of Uxbridge  
Council Delegation

Ian McVey, Manager of Sustainability,  
Office of the CAO

December 9<sup>th</sup>, 2019



*Service Excellence for our Communities*

# From planning to implementation...



**DURHAM**  
COMMUNITY  
**ENERGY**  
**PLAN**



Service Excellence for our Communities

605 Rosland Rd. E. Whitby, ON L1N 6A3, Canada PH 905-668-7711 TF: 1-800-372-1102

# We are partnership driven

- 8 Local area municipalities
- 5 Conservation Authorities
- 4 Energy Utilities & OPG
- Post-secondary institutions
- School boards
- United Way/Durham Community Foundation
- Etc...

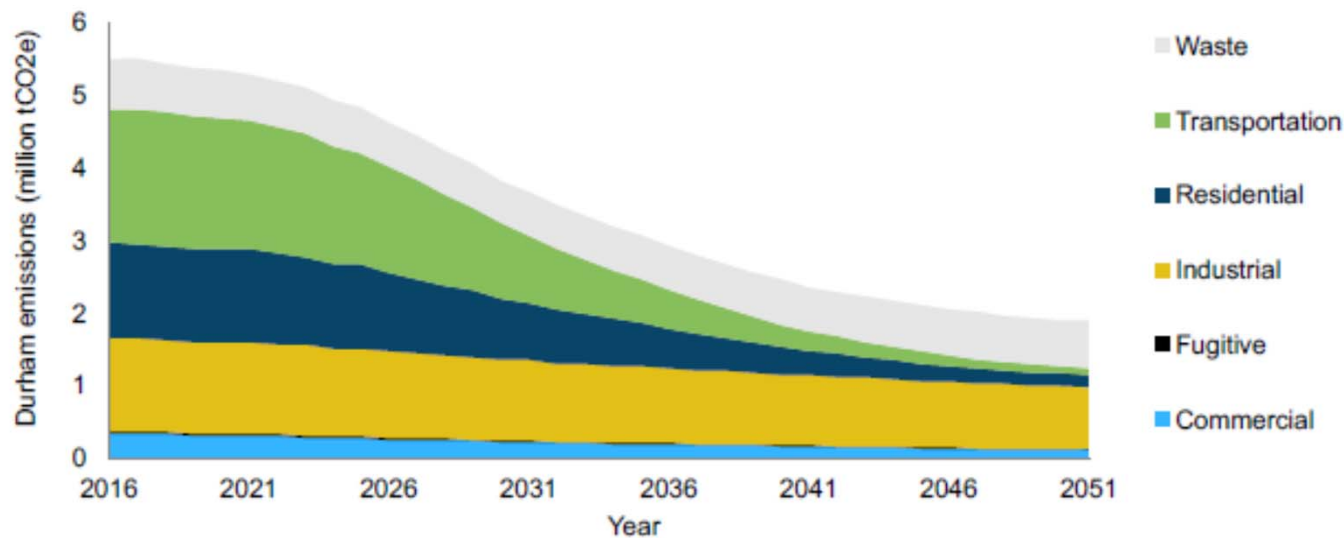


# Some guiding principles for implementation

- Build upon history of strong regional collaboration
- Align corporate and community-wide action
- Focus on transformative investment
- Improve affordability for residents -> reduce energy costs and address home flood risk
- Align with other corporate strategic priorities:
  - Economic development
  - Health
  - Service excellence



# What does Durham's Low Carbon Pathway Look like?



The most cost effective emissions reductions are found in the transportation sector, followed by the residential sector

Figure 20. Annual GHG emissions by sector, LCP (2016–2051)



# Deep retrofit program – key considerations



Align with Durham Adaptation Strategy Resilience Retrofit program

Demonstrate leadership through Durham Housing portfolio

Comprehensive retrofit program involving: neighbourhood-based mobilization, contractor engagement, financing tools, etc.



TAF Concept development grant to develop program model

Federal Gov't community eco-efficiency acceleration program will be launched in 2020 and provide \$300m for municipal-scale home retrofit programs

Ontario Carbon Trust?



Various program model options are available, from a direct municipal administration model, to an independent 3<sup>rd</sup> party entity model.

A comprehensive risk assessment, detailed program design, and business case, required to move forward



# Deep retrofit program – implementation pathway

Action	Action type	Timeline
Detailed business case and program design, including risk assessment and mitigation plan	Study	Q1 2020
Present proposed program model and business case to Council(s) for endorsement	Program proposal	Q2 2020
Seek external start-up capital for retrofit delivery entity (e.g. FCM, TAF)	Partnerships and engagement	Q4 2020
Deliver comprehensive retrofit program, including financial incentive tools (e.g. LICs, on-bill financing)	Program launch	Q4 2020

## Key Stakeholders:

- Local area municipalities
- Utilities
- Financial sector
- Contractors



Service Excellence for our Communities

605 Rossland Rd. E. Whitby, ON L1N 6A3, Canada PH 905-668-7711 TF: 1-800-372-1102

# Adaptation Plan Update

## Technical / Engineering Stream

- Updated future climate data
- Flood risk assessment
  - Roads
  - Stormwater infrastructure
- Watershed planning

## Community Mobilization Stream

- Green infrastructure/flood risk awareness
- Homeowner guide on climate resilience
- Tree planting initiatives (e.g. LEAF Backyard tree planting program)



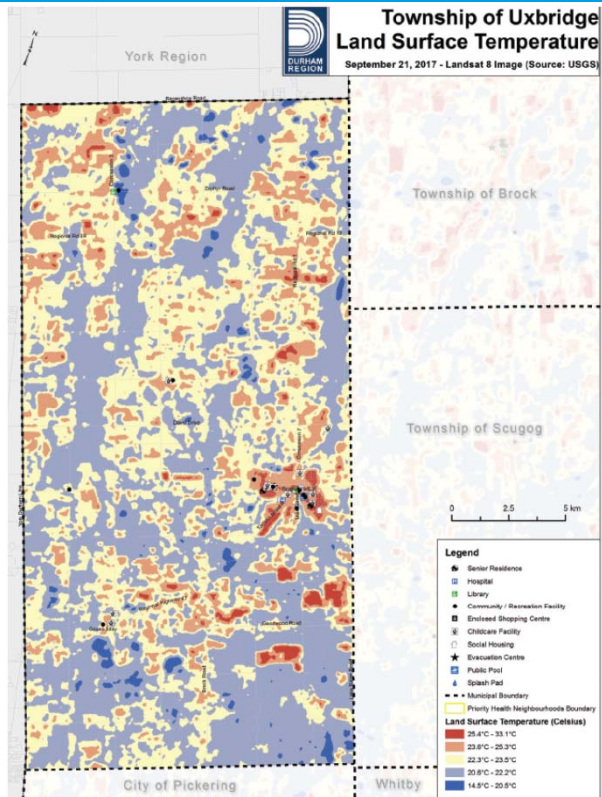


# Tree Planting Initiatives

- Durham 5 million trees
- Highway of Heroes Campaign
- Trees for rural roads
- LEAF Backyard tree planting program



# Why a backyard tree planting program?



- Climate resilience, including
  - stormwater management
  - urban heat island
- LEAF offers turn-key program solution that makes it easy for homeowners to participate



# LEAF Backyard Planting Program

- a not-for-profit organization dedicated to the protection and improvement of urban forests
- Leads a number of backyard planting programs across the GTA

Toronto	Vaughan	Markham	Richmond Hill
Ajax	Aurora	Newmarket	Whitchurch-Stouffville
	King	Georgina	East Gwillimbury



# Full Service Program

- Costs \$150 to \$220 for:
  - 30 minute arborist consultation
  - 5-8 foot tall native tree
  - Full planting and care guidance, including follow-up support
- Customers include:
  - homes./townhomes
  - Seniors buildings
  - Commercial buildings
  - Places of worship
  - Healthcare facilities
  - Etc..



# LEAF Program budget

## Budget:

- \$200,000 region-wide
  - \$80K from the region
  - \$80K from local municipalities
  - \$40K from residents
  - Private sponsorship to enhance the program (e.g. OPG)

## Next steps:

- Expression of interest from local municipalities
- Secure budgetary commitments
- Program launch (aim for spring 2020)



# Questions?

Ian McVey | Manager of Sustainability

Office of the Regional Chair & CAO | Regional Municipality of Durham

[Ian.McVey@durham.ca](mailto:Ian.McVey@durham.ca)

tel: 905.668.7711 ext. 3803 cell: 289-927-0056



Service Excellence for our Communities

605 Rossland Rd. E. Whitby, ON L1N 6A3, Canada PH 905-668-7711 TF: 1-800-372-1102